



We are a team of seasoned professionals with nearly 20 years' experience delivering unique customized wine storage solutions that are both functional and stylish. We harness our masterful craftsmanship and sophisticated technical knowledge to create high-quality, reliable and elegant wine displays, cabinets and cellars that are beyond even the most demanding expectations from wine lovers, collectors and professionals.



Email: [info@vina.hk](mailto:info@vina.hk)  
Tel: (852) 3468 6005  
Fax: (852) 3753 1367  
Web: <https://vina.hk/>

## Case Study Private House, Macao

- L-shaped corner for placing five units wine cabinets for storage and display.
- Tinged with a subtle hue of gold, the wooden finished door frame wine cabinet emanates a touch of luxury.



Exemplary combination of Wooden decorative finish and Stainless steel.

# From Idea to Reality.....Sliding Shelves

Thanks for our client for his trust, without which we could never achieve what came out to be a product of immense satisfaction.



(Picture provided by client)



(Ideas Proposed )

Clients requested to use sliding wine shelf to increase the capacity, and he provided the above photos for us to study.

We propose our ideas with the same function but with a little bit different appearance.

Thanks for our client for his trust, without which we could never achieve what came out to be a product of immense satisfaction.



(Semi-finished)



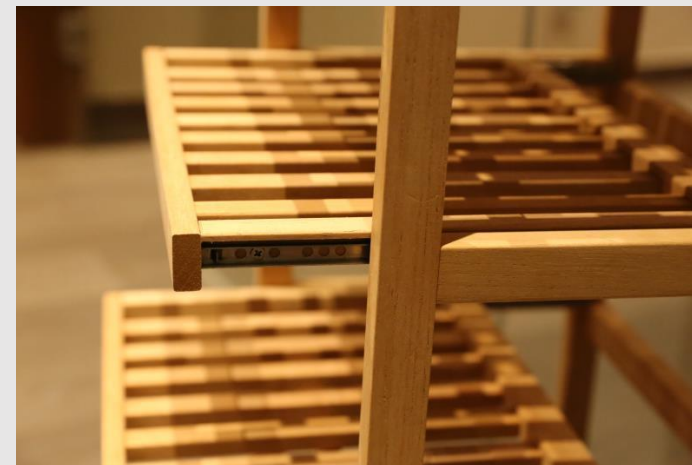
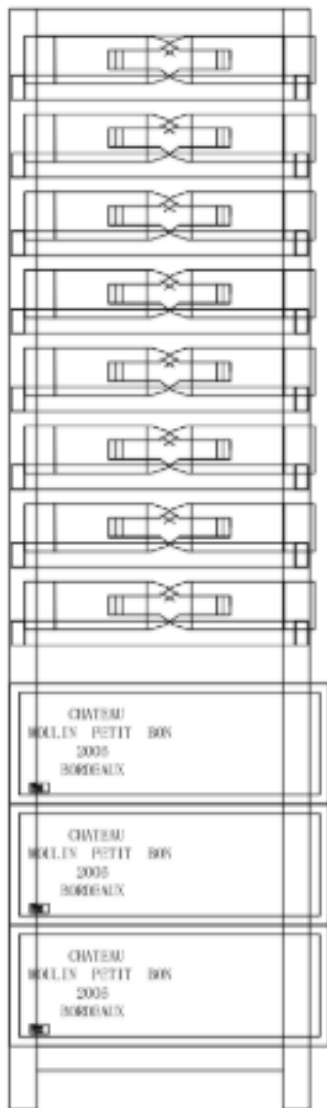
(Job Completion)

**CONCERNS of the big wine collector**

As it happened, the client is indeed this big wine collector and needs a capacity between 800 and 1000 bottles for personal collection and serving guests. We measured the dimensions of the L-shaped corner and did a re-design for the display section according to his needs.

**SOLUTIONS by VINA**

To maximize the capacity, our new design adopts horizontal storage with the capsules facing outside. For three main wine cabinets with solid doors, we adopted the most practical design (bottles are arranged horizontally interlocking one another on the capsule, and space at the bottom of the cabinet for wooden wine boxes) to achieve the capacity about 700-800 bottles.



(Our Ideas proposed)

# Transportation and Installation

Due to the restriction of the size of the lift, doors and bases of the cabinets needed to be disassembled for transportation.



Stage 2  
Doors are installed.  
Connecting electricity for testing.

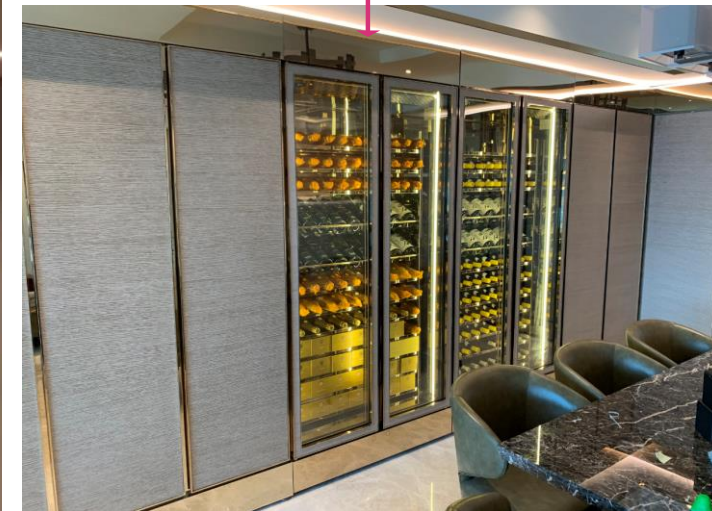


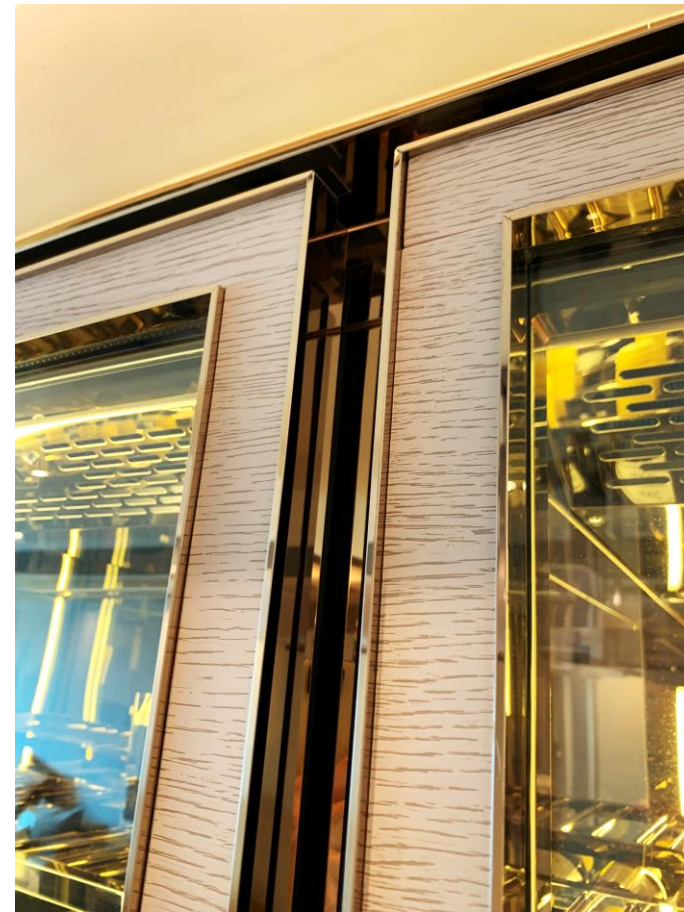
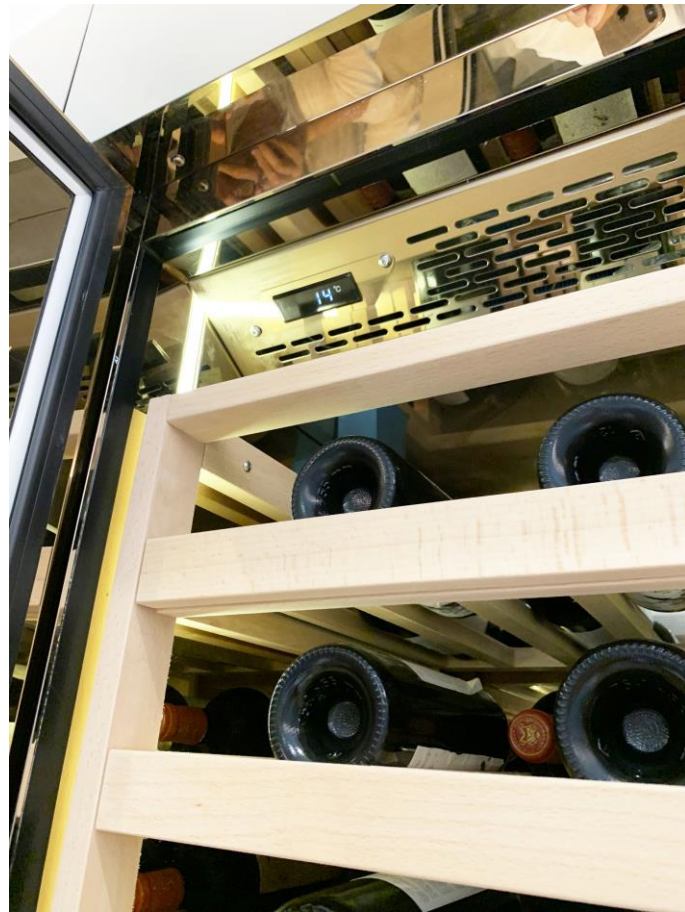
Stage 1  
The bodies and the bases  
of the cabinets are  
reassembled, waiting for  
the doors to be installed.



Stage 3  
Installation completed. And proceed  
to the decorative works .

Stage 4  
The client does the acceptance  
inspection. Wine bottles are placed in  
nice order.





### Door Frame Design

To match the design of the dining and living rooms, we put a lot of effort into the design of the door frames. We used champagne gold stainless steel to make the door frames. Combined with the wooden decorative finishing, the door frames now match the whole design of the living and dining rooms perfectly.



### Handle Design

We adopt in our design the hidden door handle, which is our usual choice for its plainness. And for the same reason, our client chose the hidden door handle to go with the wine cabinets.



"It's not 'room temperature' for reds — it's cellar temperature."  
— John Sarich