



Email: [info@vina.hk](mailto:info@vina.hk)  
Tel: (852) 3468 6005  
Fax: (852) 3753 1367  
Web: <https://vina.hk/>

## Case Study

# Four Seasons Hotel Macao L38

- Mesmerising Combination of the Decorative Wooden Finish and Stainless Steel.
- Presents a unique and exquisite and aura.



Mesmerising Combination of the Decorative Wooden Finish and Stainless Steel.



# IT'S OUR HONOR



**FOUR SEASONS**  
HOTELS AND RESORTS

We are proud and honoured to provide Four Seasons Group with 9 wine cabinets for the restaurants in one of their prestigious hotel – Four Seasons Hotel Macao L38.

With special appreciation to the trust of our customers and designers, we have had many satisfying and precious cases that yield beautiful products which in turn gained us customers' acknowledgement and credits.

We constantly reflected on our service and we continue to direct our attention to details, e.g. the finishing, lighting, door frame, lock etc.

From design, adjustment, material selection and production to delivery, installation, testing and job completion, a total of 6 months was involved.

We really enjoyed the process and this is honestly a fruitful experience even for us. Thanks for the trust of our cooperating party despite the completion time of about half a year.

Ideas came like sparks when we first got to plan out this project, even so when we met the designers. After thorough communication, we reached a common consensus on the final design.

We would like to extend our appreciation again to them for their trust and this precious opportunity.

# From Idea to Reality.....



(Idea)



(Reality)

The initial ideas on this project are shown in the above photos. What it embodies is the very essence of the British elegance and sophistication.

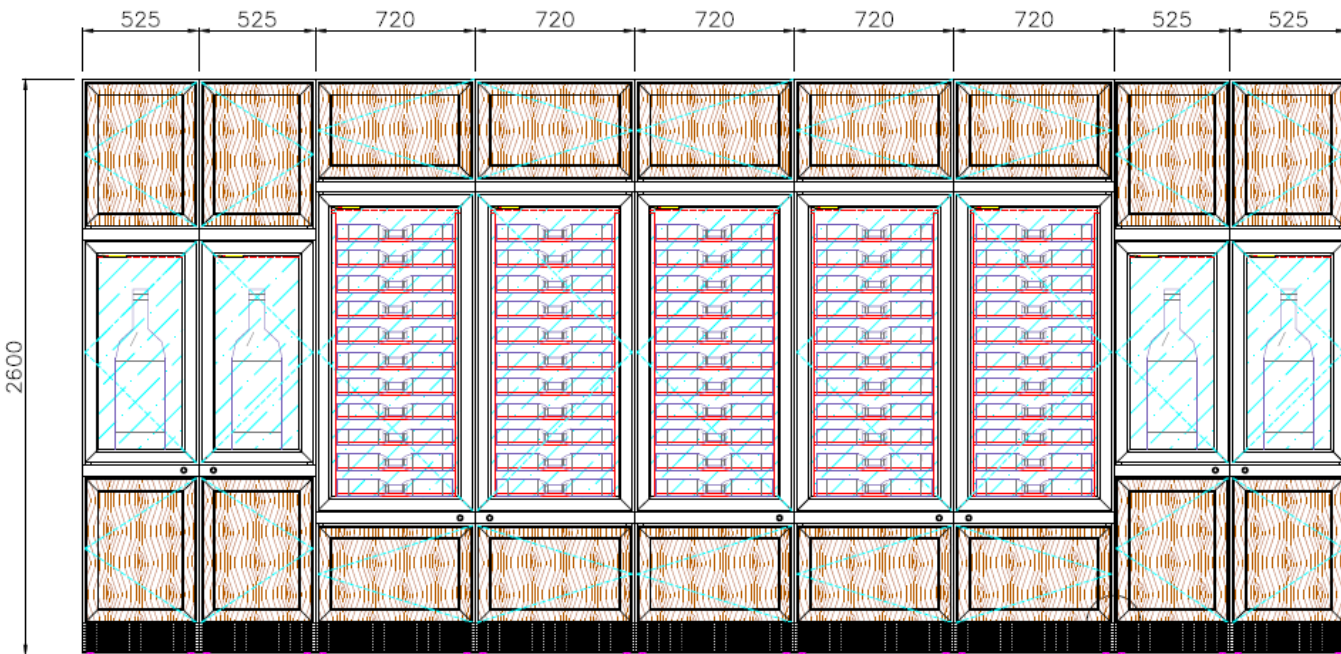
The combination of two different elements, namely stainless steel and wood, gives out a touch classics and luxury.

3 different colours of stainless steel are used for the wine cabinet. Black mirror S/S is used as the interior material; Brass golden hairline S/S is used for the louvre. For the other visible surface, we use a golden mirror S/S.

Surprisingly, the combination of wood and stainless steel presents a unique and exquisite and aura.



# From Idea to Reality.....



There are totally 9 single-door wine cabinets.

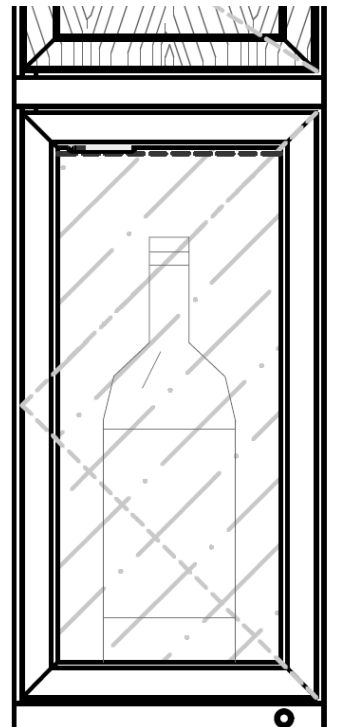
For the 5 wine cabinets in the middle, they are designed for placing standard size wine (750mL). They have a total capacity of 220 bottles with a design for the head-to-head arrangement of. This design allows greater capacity than the tilted positioning design.

To allow enough lights, lighting is set up for each layer of wine rack.



The other 4 wine cabinets, 2 on each side, are made available for Nebuchadnezzar bottles. They adopt a picture-frame-like design, which intensifies the spotlight effect for the display of its content.

For the lighting, a light source is positioned at top centre with spotlights to highlight the wine bottle, so as to present a sense of classic grandeur and of course to draw attention to the wine bottle.



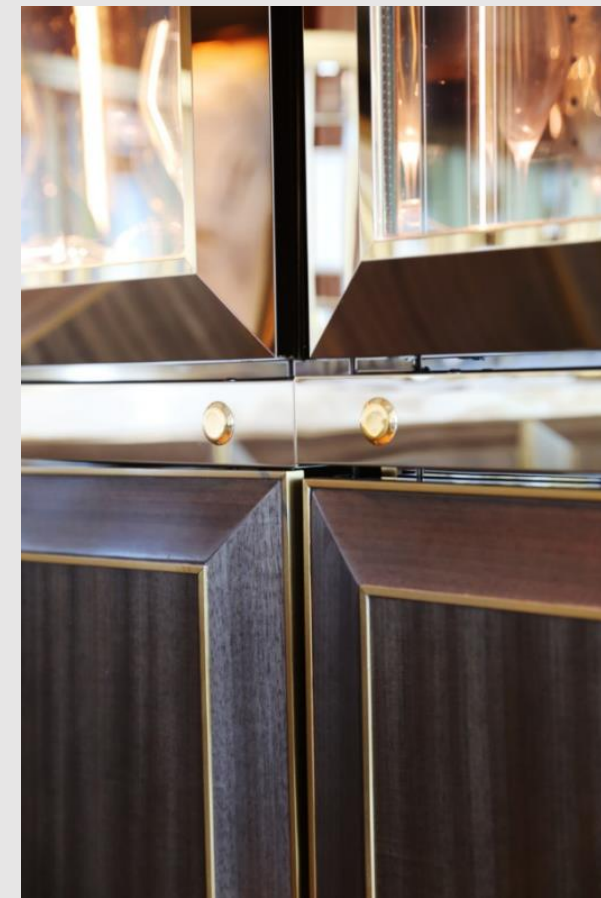
# We also focus details...

## Door Frame Design



To ensure the coherence of the overall design, we spare no effort to work on the door frames. Gold mirror stainless steel is chosen to make the door frames.

## ID Card Reader

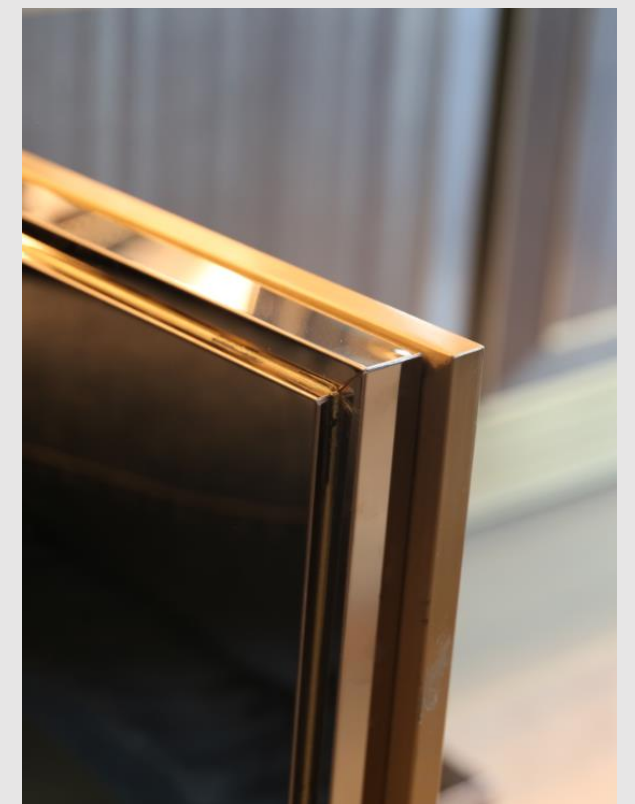


Another highlight of this project is the innovative ID card reader instead of a cylinder lock.

It is easy to use, staff-friendly and convenient. More importantly, it brings the whole design to a more high-tech level in general.

## Stainless steel finish

As for the finish of the cabinet, the smooth mirror finish on the stainless steel is absolutely satisfying to behold. With the flawless techniques and scrupulous attention to detail, a unique, gleaming and artistic cabinet is created.



# Details Make Perfection

Perfection in parts  
makes perfection in  
general.

Perfection in details  
creates a perfect whole.

They all work together  
to present a noble visual  
grandeur.



“ Excellence is in the details. Give attention to the  
details and excellence will come.”

For the lower part of the wine cabinet, we  
used a solid door design instead of a glass  
door design. The purpose of this part is to  
provide space for storage rather than  
display.

Also, room temperature is maintained in  
this part of the cabinet rather than the  
normally lower wine storage temperature.  
Therefore, this cabinet is not limited to  
wine storage, but also storing others goods.





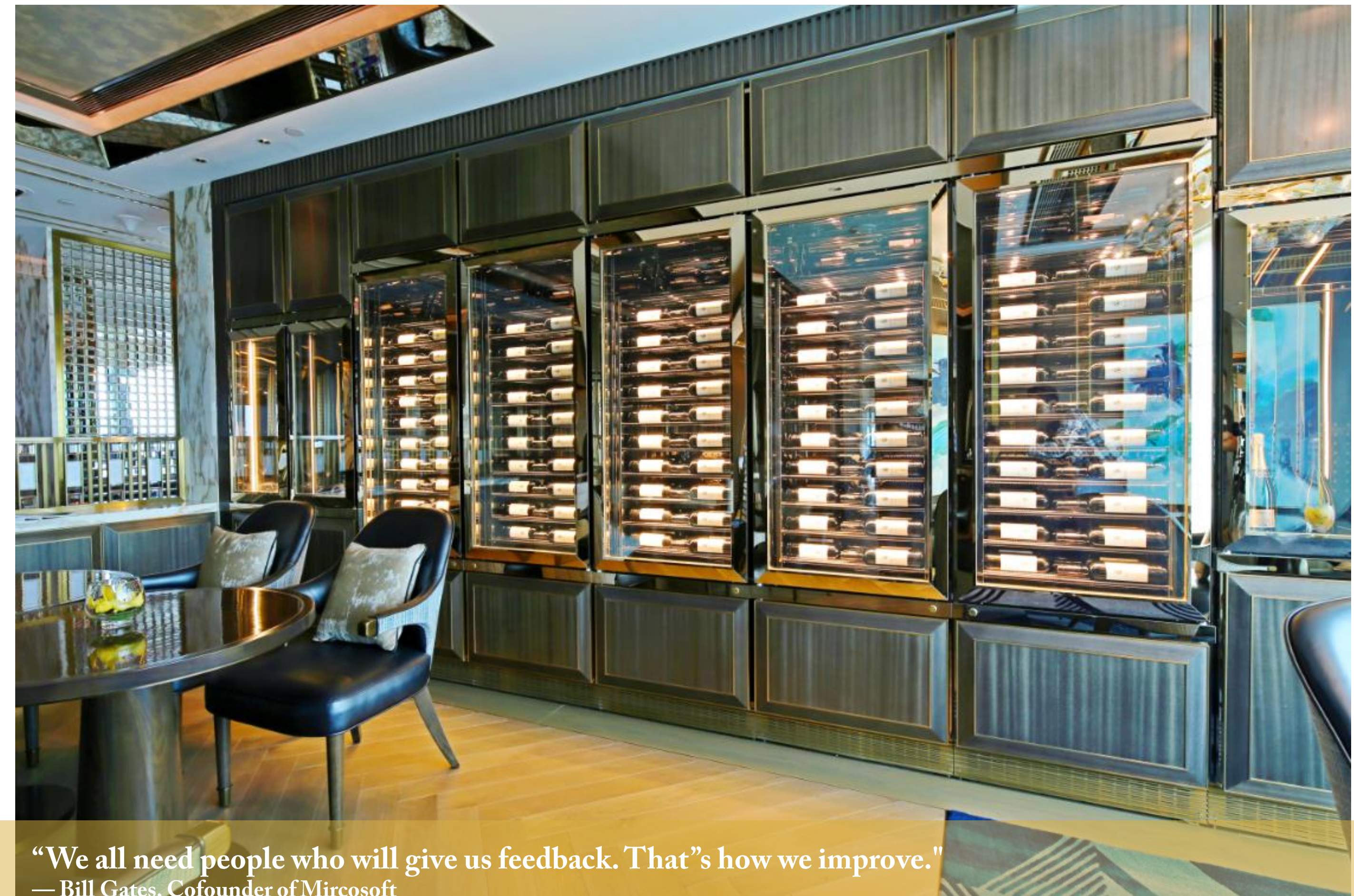
## Transportation and Installation

The remote compressor is delivered from factory to site for refrigerating and installation work first. Afterwards, 9 wine cabinets are delivered from the factory.

Testing and commissioning are conducted to make sure the wine cabinets are well-functioning.







**“We all need people who will give us feedback. That’s how we improve.”**  
— Bill Gates, Cofounder of Microsoft